

KÖRFEZ



KORFEZ FOUNDRY

www.korfezdokum.com



YOUR FOUNDRY PARTNER

KORFEZ'S APPROACH



INNOVATIVE

KORFEZ's leading technology and technical know-how are powerful tools in the development of a range of innovative products for long-term usage, thus, offering the best possible solutions for the mining and cement industries.



DYNAMIC

Due to KORFEZ's lean manufacturing process and internalized 5S philosophy, We are improving our productivity and increasing flexibility and dynamism each and every day.



CUSTOMER ORIENTED

KORFEZ listens to you, understands you, and offers the best solution for you. We put our customers first in our production of metal and create the best possible value for our customers as our main aim.

ABOUT KORFEZ FOUNDRY

We operate in the field of alloyed steel castings and the production of metal components subject to wear.

We provide high-quality products and the best custom-based solutions for various industries. We have technical expertise based on many years of experience.



A Leading Supplier Serving the Cement and Mining Industry

Korfez Foundry creates effective business solutions for the cement and mining industry. The main operation area of Korfez Foundry is alloyed steel castings, with a focus on heat resistant, and wear and impact resistant steel castings.

Our products are generated and delivered based on customer drawings and specifications with additional operations such as machining, surface treatment, and assembly. We export 90% of our products to more than 80 countries on six continents. We have over 44.000 patterns in our archive. We are capable of generating products with unit weights between 0.5 to 8,000 kgs. We can produce 800 tons monthly.

Korfez Foundry currently operates at Dilovası factory with a total area of 40.000m² and a covered area of 18.000m².

ABOUT KORFEZ FOUNDRY

We Provide Services All Over the World



We are in more than 80 countries on six continents and export 90% of the products we provide for various businesses. Our main area of expertise are in the following alloys:

- Plain Carbon steels,
- Low, medium, and high alloy steels,
- High Chromium/ High Nickel heat resistant steels,
- High Chromium and Ni-Hard type abrasive resistant steels,
- High Manganese impact-resistant steel,
- High alloy cast iron grades,
- Bi-Metallic castings.

GLOBAL NETWORK

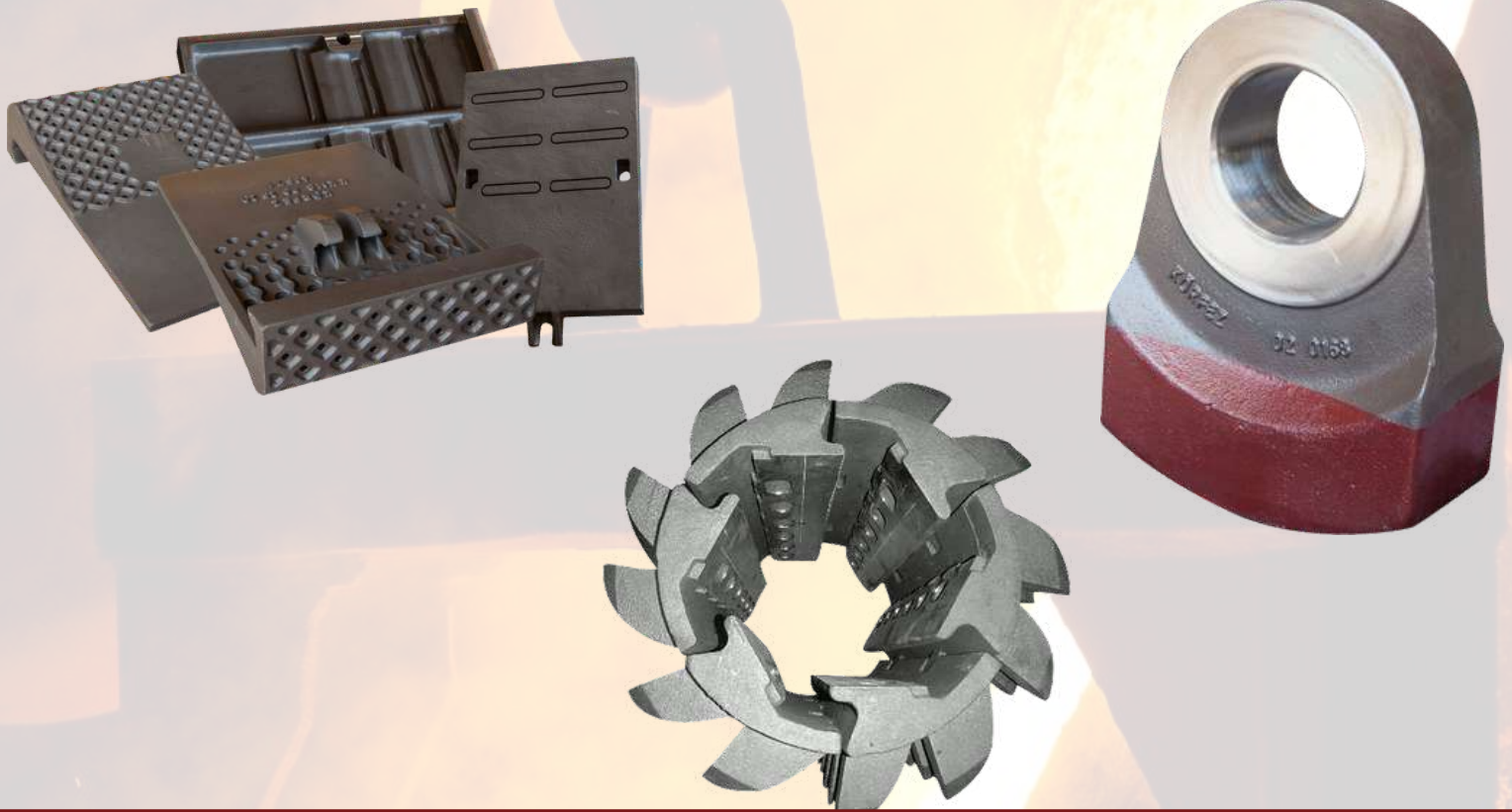


Important markets are covered by our representatives:

- Indonesia
- Malaysia
- Belgium
- France
- Italy
- Spain
- South America
- Russia
- Ukraine
- Turkmenistan
- East Europe
- South Africa
- Mid-Africa

KORFEZ FOUNDRY

Best Custom-Based Solutions



Our high quality and custom-based solutions for the industries,

- Hammer Crusher
- Roller Crusher
- Impact Crusher
- Jaw Crusher
- Cone Crusher
- Tube Mill
- Vertical Mill
- Hammer Mill
- Roller Mill
- Kiln
- Cooler
- Pre-Heater
- Boiler

KORFEZ'S COMPANIES

KORFEZ FOUNDRY



KORFEZ CENTRIFUGE

Korfez Centrifuge was established in 2004 to produce steel pipes using a centrifugal casting method.



Korfez Centrifuge produces all kinds of stainless and ductile steels with a primary focus on stainless pipes.

KORFEZ ENG

Korfez Engineering, located in Neubeckum, is your partner through its solution-oriented consultancy services and delivery of high-alloy wear- and heat-resistant steel castings for the cement and mining industries.



Korfez Engineering has increasingly concentrated on the engineering and manufacturing of system components, primarily mill shell linings and mill diaphragms for ball mills used in the cement and mining industries.

KORFEZ'S HISTORY

More than 30 Years of Experience in the Foundry

A Family Business that has Grown with the Experience Over Many Years



Korfez Foundry was established in 1988 in Turkey. The main focus of Korfez Foundry is to follow innovations in its sector, integrate them into business processes, and thus to protect and advance its presence in the sector by continuous improvement in knowledge and skills. As one of the first reflections of this approach showing the importance given to continuous improvement, Korfez Foundry moved from its Dilovası factory, which is in the same region in 1996.

At our Dilovası factory, we continue our production processes by always taking steps to improve our knowledge and skills. Currently, we continue to produce business solutions for various sectors in our Dilovası factory, with a total area of 36.000m² and a covered area of 15.000m².



For us “Quality” is not Just a Slogan but a Practical Issue

SQR CERTIFICATION

KÖRFEZ DÖKÜM SANAYİ TİCARET ANONİM ŞİRKETİ

DİLOVASI OSB 1. KİŞİ D-203 NO:2 DİLOVASI GEZİRCİ KÖYÜ

OHSA 18001:2007

Kapasite

PASLANMAZ ÇELİK, İSTENİMLİ MANGAN ÇELİĞİ, SİYAH VE
BAYANDEĞİ ÇELİK, BÜŞKÜ ALAŞIMLI ÇELİK, YÜKSEK KROMLU BEYAZ
DÖKME DEMİR VE KÜRESEL GRAFİTLİ DEMİR MALZEMELERİN
PARKA ÜRETİMİ

MANUFACTURING OF STAINLESS STEEL, AUSTENITIC MANGA-
NEEL, HEAT-RESISTANT AND ABRASION-RESISTANT STEEL, LOW AL-
LOY HIGH CHROME WHITE CAST IRON AND CAST PARTS FROM IRON
WITH SPHERULIC GRAPHITE

En veritabanı ve yedekleme sistemi ile ilgili olarak, müşterilerimizin talepleri için
Türkiye'de en yakın merkezimizde bulunan SQR sertifikasyon bürosu tarafından yapılır.

Bayırlık: Cerrahpaşa	1875-1174
En yakın SQR ofisi: Cerrahpaşa	1875-1174
Bayırlık: Cerrahpaşa	1875-1174
Bayırlık: Cerrahpaşa	1875-1174
Bayırlık: Cerrahpaşa	1875-1174
Bayırlık: Cerrahpaşa	1875-1174
Bayırlık: Cerrahpaşa	1875-1174
Bayırlık: Cerrahpaşa	1875-1174

Signature: Mustafa C. Çelebi

SIGMACERT
SİGMA CERTIFICATION
SİGMA CERTIFICATION

SİGMA CERTIFICATION
SİGMA CERTIFICATION
SİGMA CERTIFICATION

CERTIFICATE

Management system as per
ISO 9001 : 2015

In accordance with TÜV NORD CERT procedures, it is hereby certified that

Körfez Döküm San. ve Tic. A.Ş.
Dilovası OSB 1. Kısım, D-2033, No 2, Dilovası, Gebze,
TR-41455 Kocaeli,
Turkey

which is a management system in line with the above standard for the following scope:

**Production of cast parts made of stainless steels, austenitic manganese
steels, wear and heat resistant steels, low alloy steels, high chromium
white cast iron and nodular cast iron**

Certification Registration No: 41 100 120306

Audit Reference: TR 011

Certifying Body
at TÜV NORD CERT GmbH

Valid from 2019-06-27
Valid until 2021-06-26
Initial certification 2017

Mailbox: 2019-06-27

This certification was conducted in accordance with the TÜV NORD CERT auditing and certification procedures and is subject to
regular surveillance audits.

TÜV NORD CERT GmbH

Langerakstraße 20

45141 Essen

www.tuv-nord-cert.com

TUV NORD

KÖRFEZ DÖKÜM SANAYİ VE TİCARET ANONİM ŞİRKETİ

DİLOVASI OSB 1. KİŞİ D-203 NO:2 DİLOVASI GEZİRCİ KÖYÜ

ISO 14001:2015

Kapasite

PASLANMAZ ÇELİK, İSTENİMLİ MANGAN ÇELİĞİ, SİYAH VE ASİMLİ
DAYANIKLI ÇELİK, BÜŞKÜ ALAŞIMLI ÇELİK, YÜKSEK KROMLU BEYAZ
DÖKME DEMİR VE KÜRESEL GRAFİTLİ DEMİR MALZEMELERİN DÖKÜM
PARKA ÜRETİMİ

MANUFACTURING OF STAINLESS STEEL, AUSTENITIC MANGANESE
STEEL, HEAT-RESISTANT AND ABRASION-RESISTANT STEEL, LOW ALLOY STEEL,
HIGH CHROME WHITE CAST IRON, AND CAST PARTS FROM IRON MATERIALS
WITH SPHERULIC GRAPHITE

En veritabanı ve yedekleme sistemi ile ilgili olarak, müşterilerimizin talepleri için
Türkiye'de en yakın merkezimizde bulunan SQR sertifikasyon bürosu tarafından yapılır.

Bayırlık: Cerrahpaşa	1875-1174
En yakın SQR ofisi: Cerrahpaşa	1875-1174
Bayırlık: Cerrahpaşa	1875-1174
Bayırlık: Cerrahpaşa	1875-1174
Bayırlık: Cerrahpaşa	1875-1174
Bayırlık: Cerrahpaşa	1875-1174
Bayırlık: Cerrahpaşa	1875-1174
Bayırlık: Cerrahpaşa	1875-1174

Signature: Mustafa C. Çelebi

SIGMACERT
SİGMA CERTIFICATION
SİGMA CERTIFICATION

SİGMA CERTIFICATION
SİGMA CERTIFICATION
SİGMA CERTIFICATION

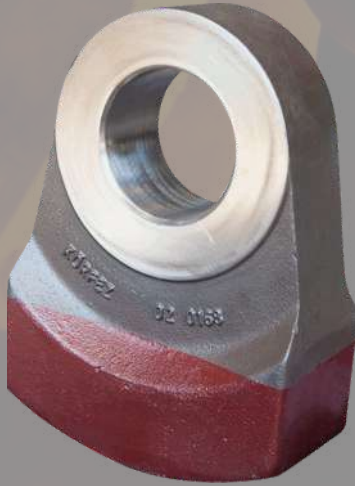


- Chemical Analysis (Every melt charge is double checked with the spectrometer to secure the required chemical composition)
- Dimensional Control
- Mechanical Tests (Hardness, Tensile, Bending, Impact Test)
- Microstructure
- NDT (Ultrasonic, Magnetic Particle, Radiographic, Liquid Penetrant Test)

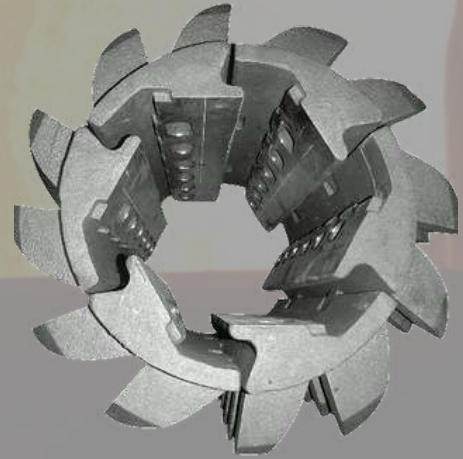
PRODUCT SOLUTIONS

Crushing

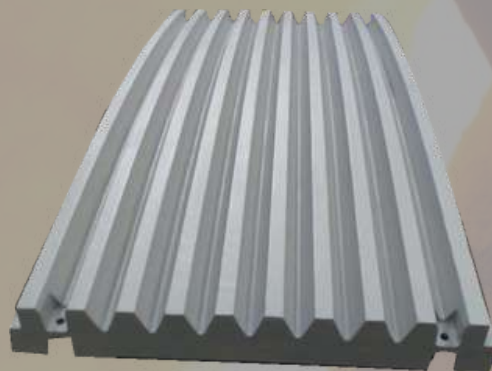
Hammer Crusher



Roller Crusher



Jaw Crusher



Impact Crusher



Cone Crusher



PRODUCT SOLUTIONS

Grinding



Tube Mill



Vertical Mill



Hammer Mill

PRODUCT SOLUTIONS

Pyro Process

Kiln



Cooler



Pre-Heater

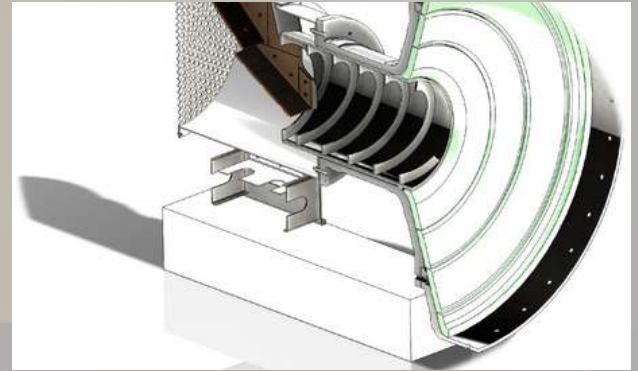
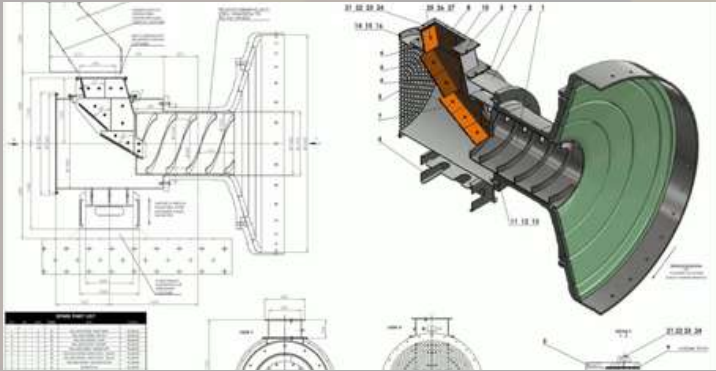


Boiler

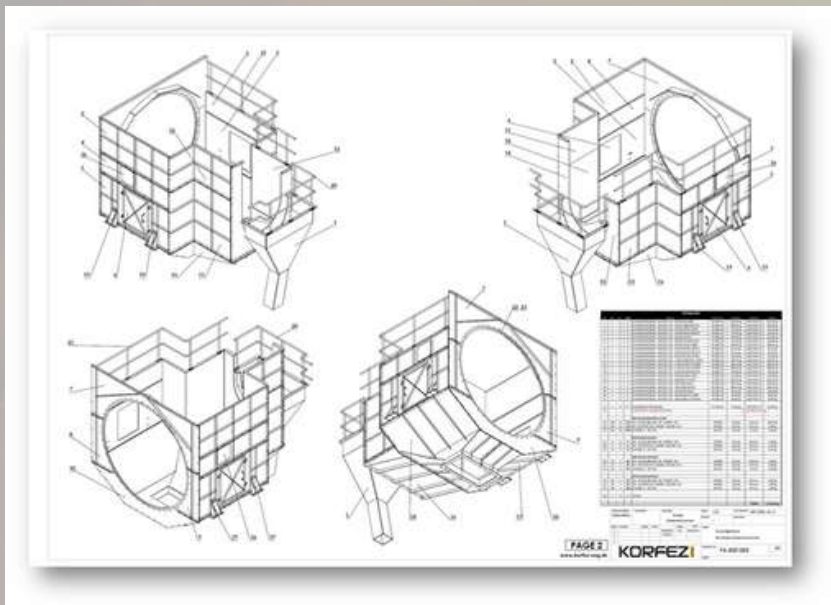


SERVICE SOLUTIONS

Engineering and Supervising



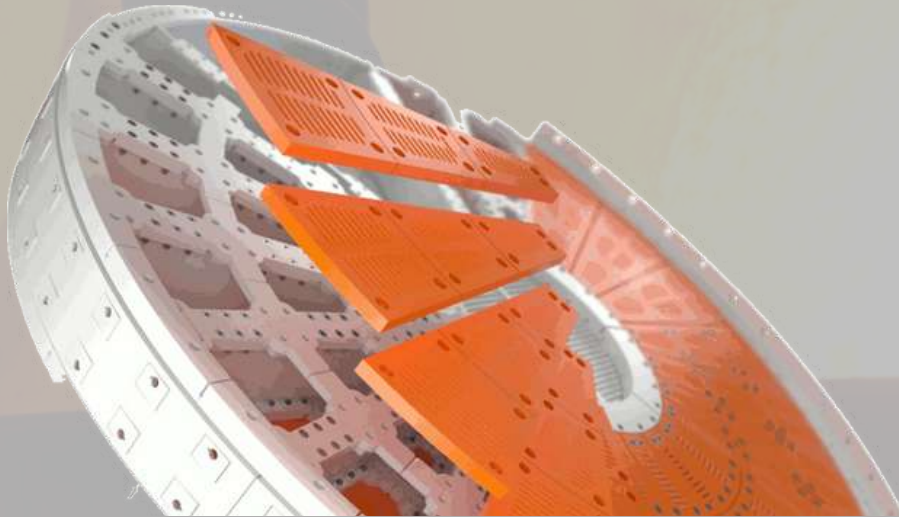
Korfez Foundry assists you on-site, determines the degree of wear, and highlights optimization potential. Korfez Foundry reliably and accurately prepares the layout drawings and spare part lists.



Installation instructions for KORFEZ's tube mill, diaphragm, kiln segment, and dip tube projects are developed as guidelines for effortless assembly.

SERVICE SOLUTIONS

Process Control and Optimization



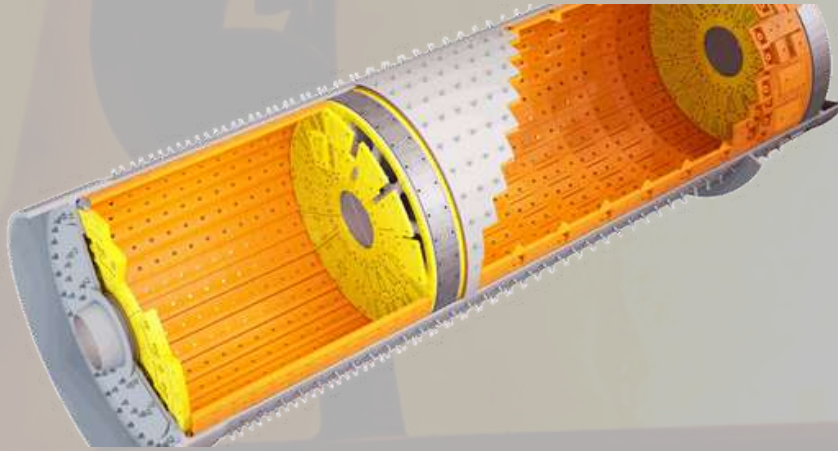
Korfez Foundry examines the complete process in your system with its expert staff.

Our consulting services exam results to find the best solution created based on a technical evaluation that provides optimization in your production processes along with other possible suggestions for solutions to improve your business processes.



SERVICE SOLUTIONS

Equipment Upgrades



As we all know, technology continues to advance and is increasingly important in business life. Technology change is inevitable and updating technology provides many benefits for your systems.

Our highly-qualified engineers offer custom-based solutions that utilize emerging technologies to increase your productivity.

Spare Parts Supply



As Korfez Foundry, we have over 20.000 patterns in our archive. We are capable of generating products with unit weights between 0,5 to 8.000 kgs.

We can produce 800 tons monthly. We aim to provide you with the highest-quality products and service quality with the shortest lead time.

ADVANCE CASTING SOLUTIONS

Bimetallic Part Casting



Bimetallic hammers consist of two different kinds of materials, a tough material in the shaft and hard and wear-resistant material in the working area. The part is produced with a unique method so that the two materials are bonded together like one single piece. A bimetallic hammer is resistant to breakage in the shaft area and is resistant to wear in the working area.

The use of bimetallic parts can increase wear resistance and service life, and decrease downtime and maintenance cost significantly, which is especially useful in applications where different mechanical properties in different areas of the part are required.

ADVANCE CASTING SOLUTIONS

Ceramic Composite Casting



Composite parts are reinforced with very hard ceramic inserts at the wear zone. Meanwhile, the remaining part is left ductile because the base material is also relatively ductile.

Consequently, the ductility of the base material is combined with the wear resistance of the ceramic inserts. Our composite parts succeed in improving the service life of conventional monometallic parts by several multiples.

ADVANCE CASTING SOLUTIONS

Centrifugal Casting



Centrifugal cast pipes are used in various industries as boilers, industrial furnaces, chemical/petrochemical plants, and in many other applications.

Our sister company, Korfez Centrifuge specializes in centrifugal casting and manufactures centrifugal pipes of excellent quality. This unique technology accesses seamless pipe production of the desired dimension and desired chemical analysis.

OPERATIONAL UNITS



OPERATIONAL UNITS



Korfez Foundry currently operates in its Dilovasi factory with a total area of 36.000m2 and a covered area of 15.000m2.

OPERATIONAL UNITS



Our production facilities consist of the molding, melting lines, heat treatment lines and machinery.

KORFEZ FOUNDRY
www.korfezdokum.com

PROJECTS



PROJECTS



ONLINE ASSEMBLY PROJECTS



Korfez dynamic team transforms supervision services to online instead of field because of the travel restrictions due to Covid 19. We are proud to complete the supervision via online channels.



CONTACT US



00 90 262 754 51 77



info@korfezdokum.com



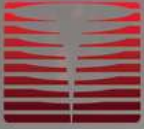
www.korfezdokum.com



DOSB 2. Kısım D-2033 Sk. No:2 41455
Dilovası/ Kocaeli/ Türkiye



korfezdokum



WE ARE MORE THAN JUST A FOUNDRY

